



The Missouri Center for Public Health Excellence (MoCPHE) believes Missourians deserve better health outcomes. Missouri has seen decreases in federal and state public health funding, a trend that drives Missouri's poor public health outcomes.



51st

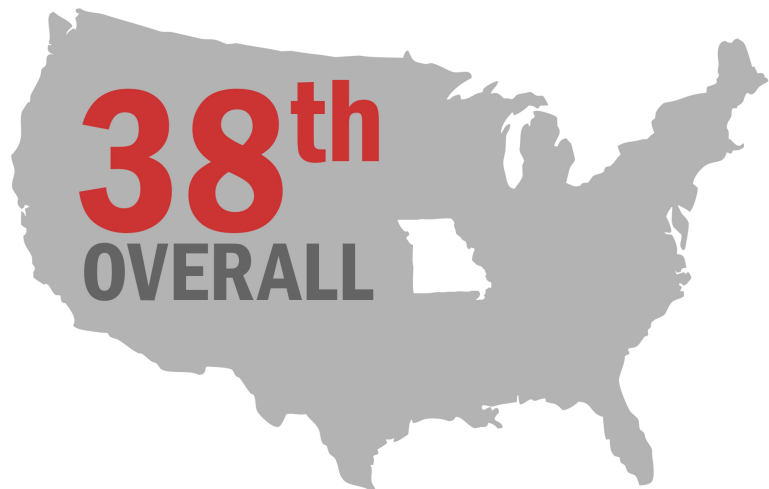
in public health spending

US Average: \$35.82

Missouri: \$5.90

(To bring Missouri up to national average would require \$184,017,313 in new public health funding)

The United Health Foundation annually ranks states on their performance on key public health indicators. In the most recent report, Missouri had an overall rank of 38th.



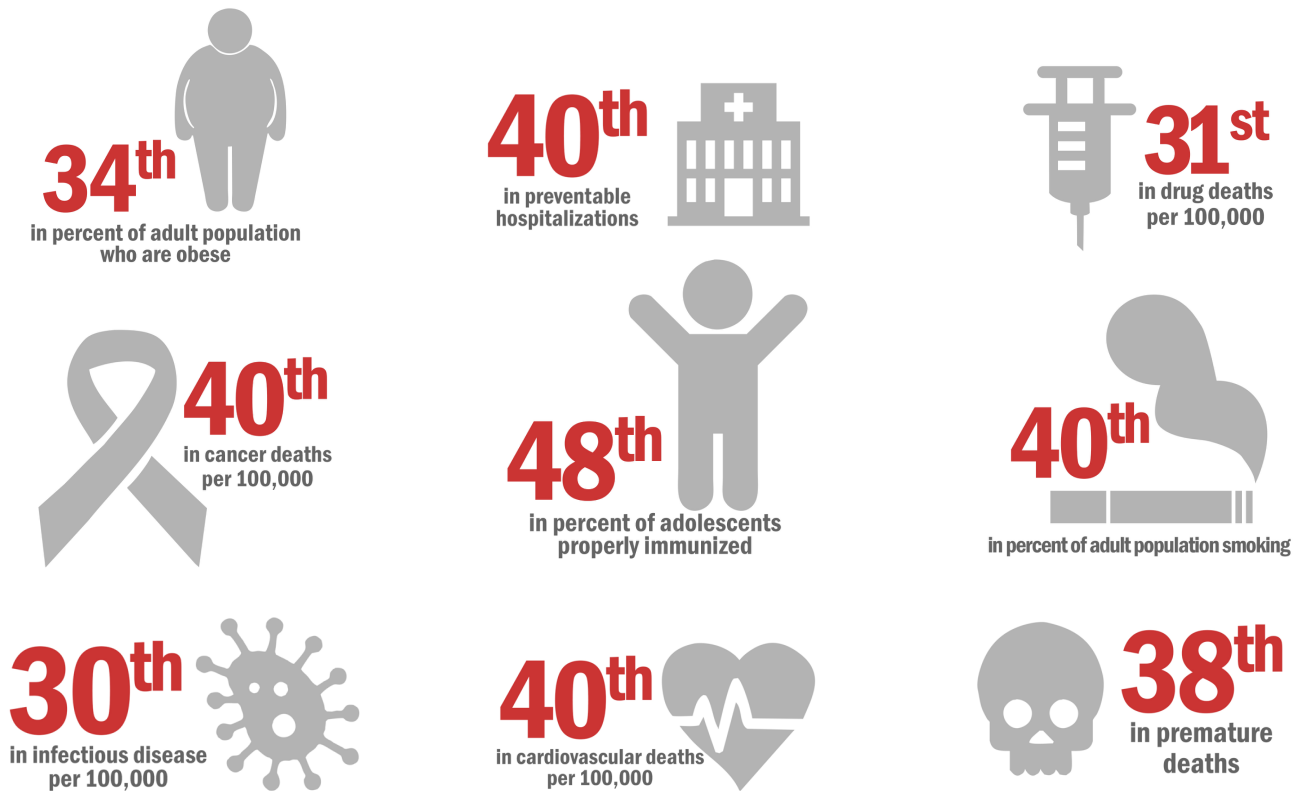
As a result of low public health funding, Missouri continues to lag behind in public health outcomes.

MoCPHE believes that we can do better.

The Department of Health and Senior Services and Local Health Departments must be advocates for increasing Missouri’s funding of public health, as well as leaders in better leveraging local and state funding to capture Federal funding opportunities. They also must have the knowledge and experience to effectively manage limited resources in a way that will give Missourians the greatest return on investment. MoCPHE believes that public health leaders must have a background in public health and have experience working with the political drivers that shape public health policy.

Increases in public health spending are a good investment. The Trust for America’s Health report estimates every \$1 spent on programs that succeed in improving nutrition, increasing physical activity or preventing tobacco use yields approximately \$5.60 in savings on future health care. **Investing \$1 in substance use prevention can realize as much as \$34 in savings including reduced child welfare costs.**

Missouri Public Health Rankings



MoCPHE advocates that the State Health Director develop strategic recommendations to reverse the current funding trend—the greatest threat to the public’s health that we currently face. The decline in funding can no longer be ignored.